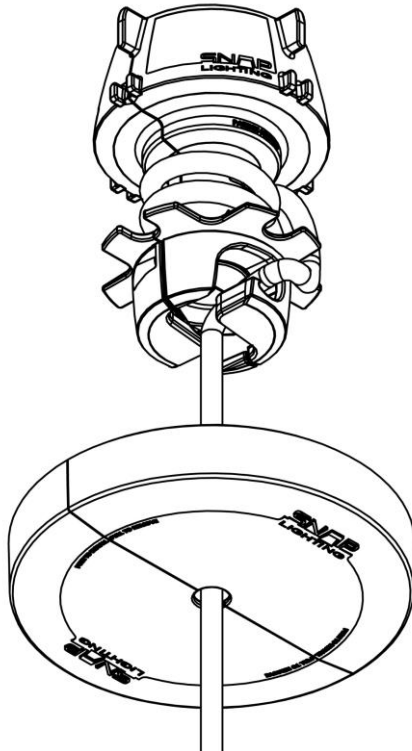






# PENDANT FITTING


## SL-1601-103

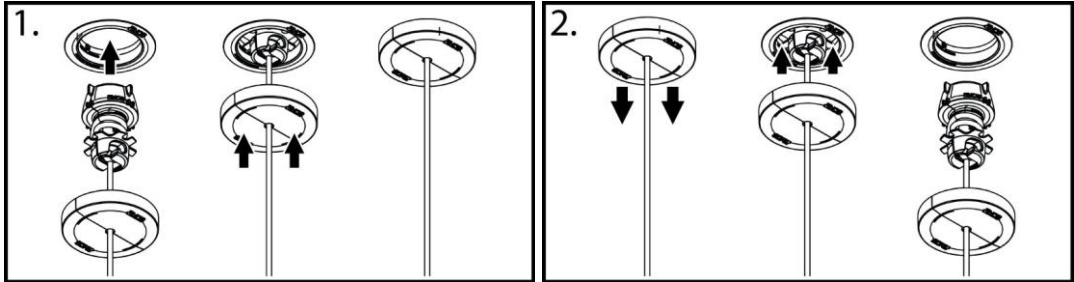


## SNAP LIGHTING - PENDANT FITTING

Thank you for purchasing this Snap Lighting product. To ensure correct function and safety please read and follow all instructions carefully before installation and use of this product. Check website for warranty, terms and conditions.

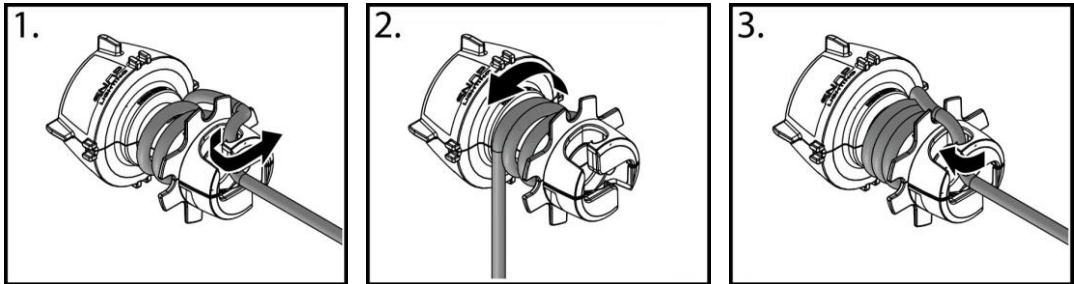
**Model No:** SL-1601-103  
**IP Rating:** IP20  
**Certification:** RCM   
**Class:** Class II   
**Max Weight:** 5kg  
**Cable Length:** 1m Max (Adjustable)  
**Max Ceiling Angle:** 30 Degrees from Horizontal

**Rated Voltage:** 220-240V AC 50/60Hz  
**Rated Power:** 40W Max  
**Rated Ambient (Ta):** 40°C  
**Location:** Indoor Use Only   
**Lamp Holder (Globe):** E27 (Edison Screw)  
**Compatible With:** Snap Lighting - Universal Socket



### FITTING

- To Install:** Push fitting into Snap Lighting Universal Socket firmly until it stops, then it will drop slightly into position. Push up canopy cover
- To Remove:** Pull down canopy cover. Push fitting into Snap Lighting Universal Socket firmly until it stops, then it will drop out of the socket



### HEIGHT ADJUSTMENT

- Unhook cable
- Wind around (or unwind) until desired length is achieved (use the notches for incremental adjustment)
- Re-hook cable

### SAFETY

- It is the responsibility of the installer/owner to ensure the mounting surface (plaster) is in suitable condition to support 2 times the weight of any fittings attached (max. fitting weight 5kg)
- If the external flexible cable or cord of this luminaire is damaged, it shall be exclusively replaced by the manufacturer or its service agent or a similar qualified person in order to avoid a hazard
- WARNING:** Ensure globes/fittings have cooled before handling the products in any way
- WARNING:** For your safety and the safety of others, use only with official Snap Lighting products