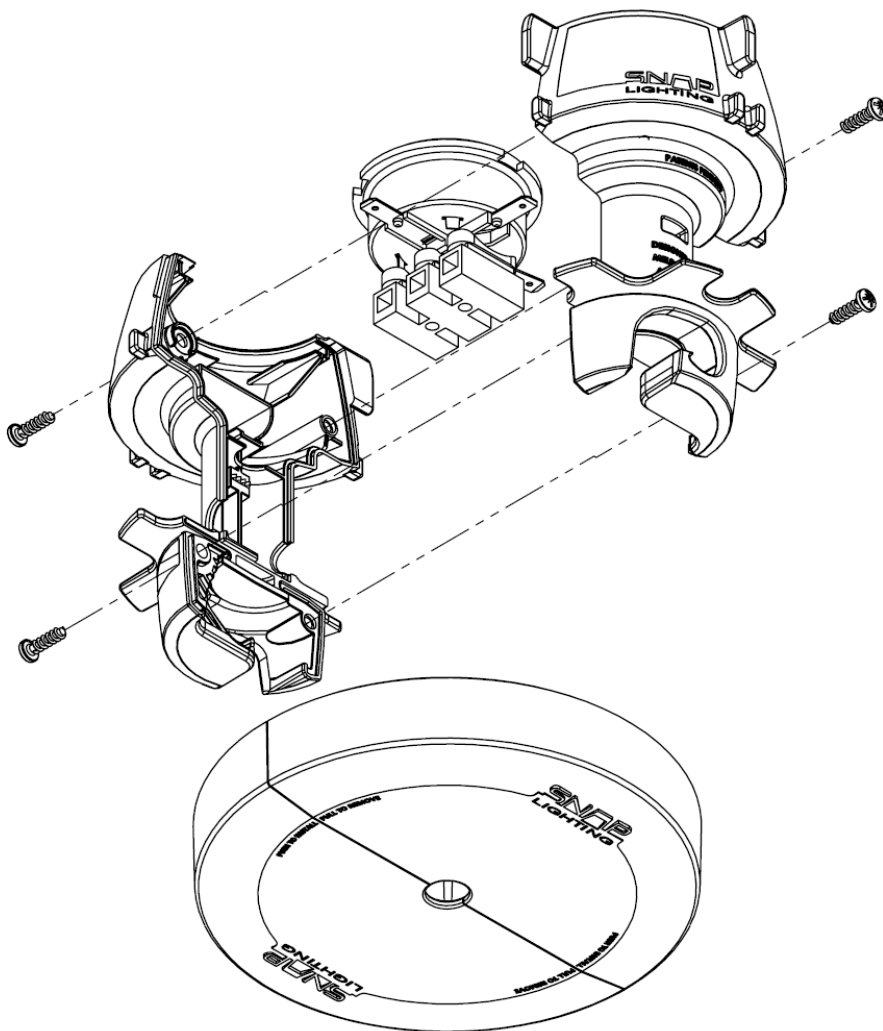




PENDANT CONVERSION KIT



SL-1601-103 (CK)



**** MUST BE ASSEMBLED BY A LICENCED ELECTRICIAN ****

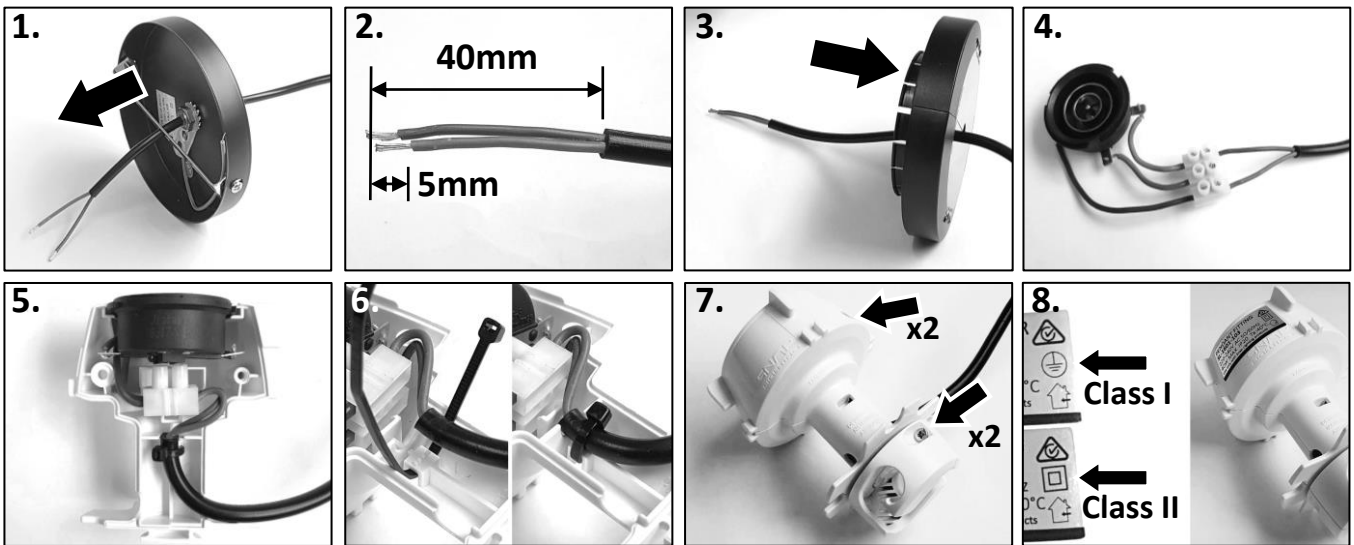
SNAP LIGHTING - PENDANT CONVERSION KIT

Thank you for purchasing this Snap Lighting product. To ensure correct function and safety please read and follow all instructions carefully before installation and use of this product. Check website for warranty, terms and conditions.

Model No:	SL-1601-103 (CK)	Rated Voltage:	220-240V AC 50/60Hz
IP Rating:	IP20	Rated Power:	40W Max
Certification:	RCM 	Rated Ambient (Ta):	40°C
Max Weight:	5kg pendant	Location:	Indoor Use Only 
Max Ceiling Angle:	30 Degrees from Horizontal.	Compatible With:	Pendants suspended by a single power cable only (no chains, wires or other suspension methods)

TOOLS NEEDED

- Phillips/ Pozi head screwdriver - size 1 (PH1/PZ1)
- Wire strippers
- Flat head screwdriver – small (terminal block)
- Side cutters



ASSEMBLY

1. Get your pendant. Remove and discard the canopy and any canopy attachments from the pendant cable until just the cable is left at that end
2. Strip the outer cable insulation 40mm (+/- 5mm) and expose 5mm of copper on the inner wires. (If cable already stripped, trim wires to 40mm)
3. Thread cable through Snap Lighting canopy with the clips facing away from the pendant
4. Screw the pendant cable wires into the terminal block matching the live, neutral and earth (if applicable)
5. Fit into the Snap Lighting pendant housing as shown
6. Cable-tie the cable into the housing. Ensuring cable tie and teeth are biting into the outer insulation
7. Secure housing with 2 screws supplied (1 each half – do not over tighten) and secure housing hooks to housing with 2 screws supplied (1 each half – do not over tighten)
8. Apply one sticker to the housing depending on 'class' of pendant as shown:
 1. Class I – pendant cable has earth wire
 2. Class II – pendant cable does not have earth wire

SAFETY

- **WARNING:** Must be assembled by a licenced electrician
- **WARNING:** Pendant must weigh less than 5kg
- **WARNING:** For your safety and the safety of others, use only with official Snap Lighting products