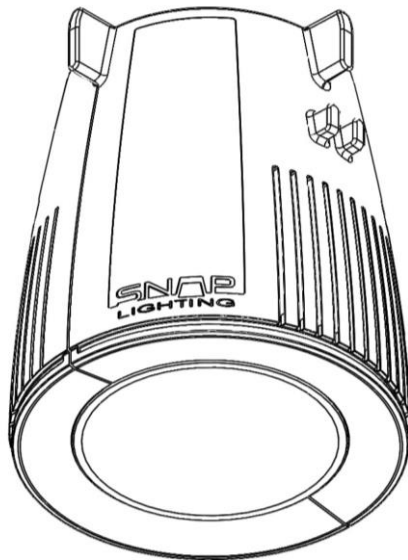






DOWNLIGHT GU10 FITTING


SL-1601-102

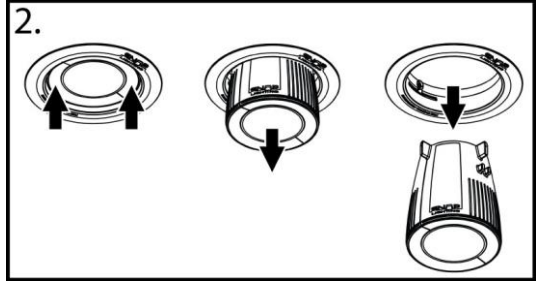
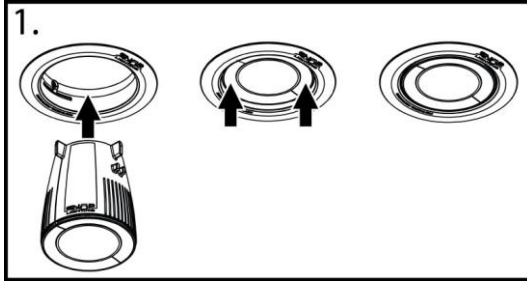


SNAP LIGHTING - DOWNLIGHT GU10 FITTING

Thank you for purchasing this Snap Lighting product. To ensure correct function and safety please read and follow all instructions carefully before installation and use of this product. Check website for warranty, terms and conditions.

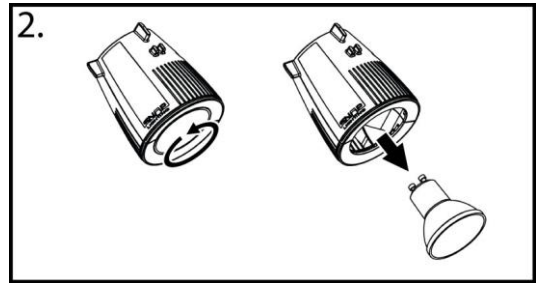
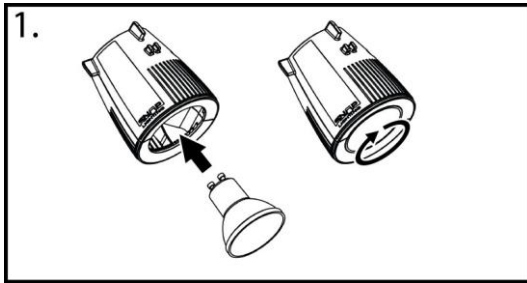
Model No: SL-1601-102
IP Rating: IP20
Certification: RCM 
Class: Class II 
Globe: GU10 LED (10W Max)
(50mm dia. 51-55mm height*)

Rated Voltage: 220-240V AC 50/60Hz
Rated Power: 10W Max
Rated Ambient (Ta): 40°C
Location: Indoor Use Only 
Compatible With: Snap Lighting -
Universal Socket



FITTING

- To Install:** Push into Snap Lighting Universal Socket firmly until it stops, then it will drop slightly into position
- To Remove:** Push into Snap Lighting Universal Socket firmly until it stops, then it will drop out of the socket



GLOBE

- To Install:** Insert and rotate clockwise until it stops (use fingers or rubber gloves on lens to rotate)
- To Remove:** Rotate anticlockwise until it stops (use fingers or rubber gloves on lens to rotate), and tip into hand

SAFETY

- WARNING:** For use with GU10 LED globes up to 10W only. Do not use with halogen globes
- WARNING:** Ensure globes/fittings have cooled before handling the products in any way
- WARNING:** For your safety and the safety of others, use only with official Snap Lighting products

*larger overall heights may be accommodated if the 50mm diameter flange falls within the specified range